



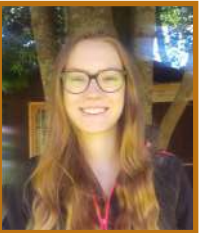
A snap shot of LETCEE's work



**> 7000
children benefitted**

VOLUNTEERING AT LETCEE

Volunteer Rebekka Ulrich from Germany, spent 3 months at LETCEE. She made a great contribution at the Barracks especially. Thank you for all that you did!



AFRICA PLAY CONFERENCE

Annika Savage presented LETCEE's work at the Africa Play Conference held in Johannesburg. Her presentation was titled "The impact of play on kids with disabilities."

NEW CHILDREN'S CENTRES OPENED

Centres, which include a Toy Library and playground and where 50 children are fed breakfast and lunch daily, were established in Potspruit and Upper Thulini.



MEDICAL CHECKS FOR CHILDREN

Another successful Medical Checks for Children was held. Thanks to the team of medical practitioners from the Netherlands who screened, referred & treated 735 children this year!

HOME and FAMILY BASED ECD SERVICES

LETCEE has continued to implement home and family based ECD services in the Njengabantu, Matimatolo, Lilani, Sgedlane, Potspruit, Mbuba and The Barracks communities. These projects include playgroups, meals for the children, home visits, food gardens, and Toy Libraries.



1988 children aged 3-5 yrs attended 2 playgroups each week, and a play session at the closest Toy Library at least once every month. A total of 67 Abahambi have worked with children during this year.

SMARTSTART

In addition to the Abahambi, LETCEE manages 234 Smart Start playgroup facilitators in the Umzinyathi region.

A total of 2224 children attend 2 playgroups each week.



IMPROVED NUTRITION



LETCEE has established
6 gardens in Njengabantu
5 gardens in Matimatolo
4 gardens in Lilani
2 gardens in Mbuba
1 garden in Sgedlane
1 garden at the Barracks
1 garden in Potspruit
to improve family food security



1988 children had a bowl of fortified porridge before each play session throughout the year.

248 children received 2 meals per day EVERY day of the year.

TRAINING

This year 165 STUDENTS achieved the Further Education and Training Certificate in ECD at NQF Level 4.



A further 152 trainees are working towards their qualification.

Training was offered in Greytown, Nquthu Pomeroy and Trust feed.

Skills courses including Play to Learn and offered





History will judge us by the difference we make in the everyday lives of children.

Nelson Mandela

TOY LIBRARIES

Toy Libraries ensure that children in the rural and remote communities access a variety of toys.

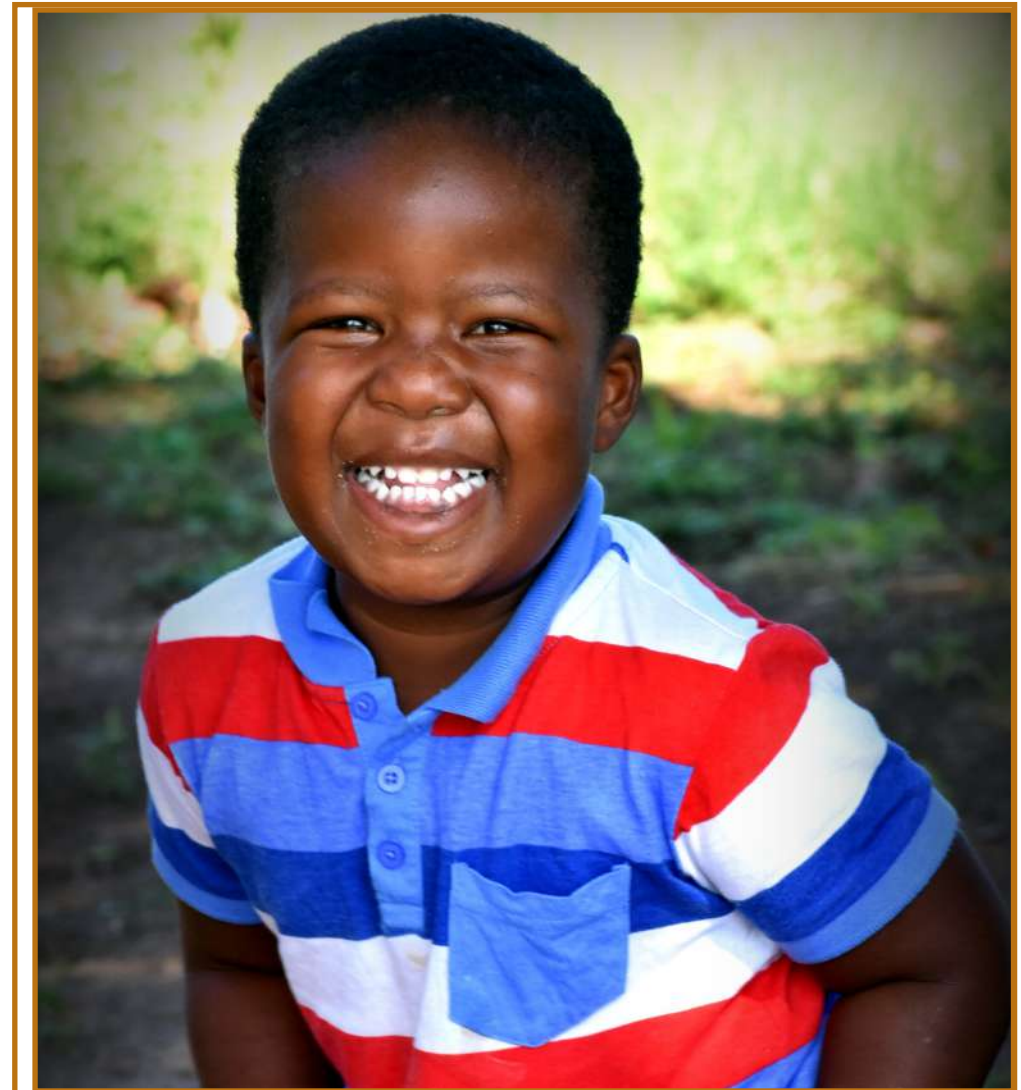
- 8 Fixed Toy Libraries
- 3 Mobile Toy Libraries



INCLUSION



This year, LETCEE focused on the inclusion of all children into our play-group sessions. Our "Play-Able Pick up" Mobile Toy Library has enabled us to visit the homes of children with disabilities, lend them toys and encourage caregivers to continue playing and learning. We have also transported children to their therapy sessions and to mixed ability play groups. The Children's progress is very pleasing.



Some of our amazing team. Thank you all for your passion & commitment to the children

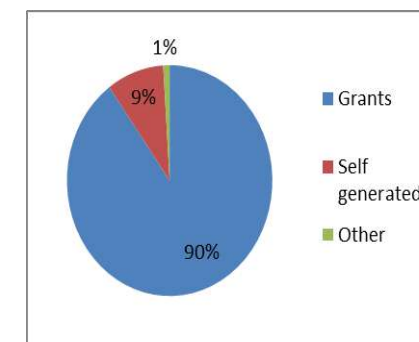
FUNDING

LETCEE acknowledges and thanks the following partners for their support:

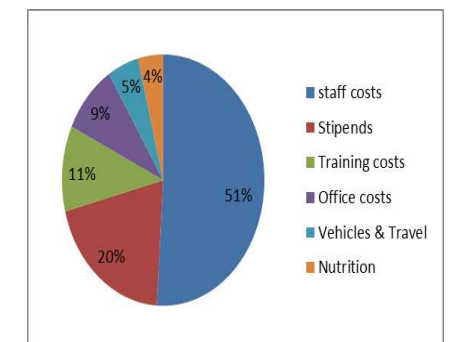
- | | |
|---------------------------------|----------------------------|
| Anglo American Chairman's Fund | Oppenheimer Memorial Trust |
| Bibionef | Pick n Pay |
| Botha Family | Seedco |
| CPS Seedlings | Smart Start |
| First Rand Foundation | Solon Foundation |
| Grindrod Family Centenary Trust | Sunshine Seedlings |
| HCI Foundation | The Humanitarians |
| Investec | The Lunchbox Fund |
| Izingane Happy Foundation | Tiger Brands |
| Jim Joel Fund | Victor Daitz Foundation |
| JAM International | Volkswagen South Africa |
| Ken Collins Trust | Wembley College |
| Kinderfonds MAMAS | |
| KPMG | |
| Macsteel | |
| Mondi South Africa | |
| NCT Forestry | |



INCOME & EXPENDITURE 2019



Income: R7 032 362



Expenditure: R6 740 106



- 033 413 2736
- ecd@letcee.org
- www.letcee.org
- LETCEE

130 Voortrekker St
Greytown, 3250